



Board of Architectural Education

Career Paths Leading to Registration at the Architects Registration Board

Publication No: BAE-109

Career Paths to Leading to Registration at the Architects Registration Board

Authored by : Educational Standards Committee of the Board of Architectural Education

Published by : Board of Architectural Education,
Sri Lanka Institute of Architects,
No. 120 / 7, Vidya Mawatha,
Colombo 7.

Ratified by Council: 29th July 2025

Publication No. BAE-109

All rights reserved. No part of this publication may be reproduced in any material form without the written permission of the SLIA, except for academic purposes where due acknowledgement shall be provided.

CONTENTS

Introduction	
Paths to become a Chartered Architect	
Paths to become an Architect	
Paths to become an Architectural Licentiate	

INTRODUCTION

Institutions the Qualifications of which are Recognised for the Time Being for the Purpose of Registration

The following are the accepted qualifications in order to register as Chartered Architects or Architects or Architectural Licentiates.

CATEGORY	EXAMINING INSTITUTION	RECOGNISED QUALIFICATION
Chartered Architect	Sri Lanka Institute of Architects	Passed the Part III Examination of the Sri Lanka Institute of Architects and subsequently taking the Architects Oath and becoming a Corporate Member of the Sri Lanka Institute of Architects.
Architect	Sri Lanka Institute of Architects	Passed the Part III Examination of the Sri Lanka Institute of Architects.
Architectural Licentiate	Sri Lanka Institute of Architects	Passed the Qualifying Examination for Architectural Licentiates.

PATHS TO BECOME A CHARTERED ARCHITECT

The Sri Lanka Institute of Architects (SLIA) established by the “Sri Lanka Institute of Architects Law No. 1 of 1976” and amended by the “Sri Lanka Institute of Architects (Amendment) Act No. 14 of 1996” is empowered to regulate and control architectural education in Sri Lanka. Accordingly, SLIA has established curricula for Parts I, II & III Examinations of the Sri Lanka Institute of Architects. Any person who intends to register with the Architects Registration Board (ARB) to practice as a Chartered Architect in Sri Lanka must possess these qualifications.

Only those candidates who have passed the Part I and Part II Examinations of the Sri Lanka Institute of Architects or obtained exemptions thereof are eligible to sit the Part III Examination of the Sri Lanka Institute of Architects which is conducted only by SLIA.

SLIA follows two processes to admit persons to obtain professional qualifications to register to practice Architecture in Sri Lanka. These are the **Examination Process**, and the **Exemption Process**.

THE EXAMINATION PROCESS

This refers to the formal path of architectural education for candidates to become Chartered Architects. SLIA conducts the following examinations annually for eligible candidates.

1. **Part I Examination of the Sri Lanka Institute of Architects** (SLIA Part I).
2. **Part II Examination of the Sri Lanka Institute of Architects** (SLIA Part II). Passing or obtaining exemptions from the SLIA Part I Examination is a prerequisite to sit or obtain exemptions from the SLIA Part II Examination.
3. **Part III Examination of the Sri Lanka Institute of Architects** (SLIA Part III). Passing or obtaining exemptions from the SLIA Part I and Part II Examinations is a prerequisite to sit the SLIA Part III Examination.

Teaching at SLIA Part I and SLIA Part II levels are done by Schools of Architecture. SLIA is the only institution that teaches and prepares candidates to sit the SLIA Part III Examination.

THE EXEMPTION PROCESS

SLIA considers the exemption of Sri Lankan qualifications and foreign qualifications separately. SLIA conducts a structured and systematic approach in evaluating applications submitted by academic institutions of Sri Lanka for validation of programmes of study in architecture conducted by those institutions.

1. For Sri Lankan qualifications; validations are done only at Part I and Part II levels. SLIA has granted three validation statuses. Exemption of Sri Lankan architectural qualifications are based on the validation status granted by SLIA to architectural educational programmes as follows.

Status	Entitlement
Candidate Status	Graduates can sit the respective Examination of SLIA.
Listed Course	Graduates can apply to obtain exemptions from relevant SLIA Examinations.
Accredited Status	Graduates are exempted from the respective SLIA Examination.

Architecture Programmes in Sri Lanka that have been validated by SLIA are as follows;

Institution	Programme of Study	Validation status granted	Remarks
Department of Architecture of the University of Moratuwa	Honours Degree of Bachelor of Architecture (B. Arch.)	Accredited Status (Revalidation due in 2029)	<p>a. Those who have obtained 90 credits in the first 3 years of the programme are entitled to be exempted from the SLIA Part I Examination.</p> <p>b. Graduates are entitled to be exempted from the SLIA Part I and SLIA Part II Examinations.</p> <p>c. B.Sc. (BE) conferred previously is exempted from the SLIA Part I Examination.</p> <p>d. M.Sc. (Arch) conferred previously is exempted from the SLIA Part II Examination.</p>
City School of Architecture (Colombo) Limited	CSA Diploma in Architectural Studies	Accredited Status (Revalidation due in 2026)	Exempted from the SLIA Part I Examination.
	CSA Higher Diploma in Architecture	Accredited Status (Revalidation due in 2026)	Exempted from the SLIA Part II Examination.
School of Architecture of the Sri Lanka Institute of Information Technology (SLIIT), Malabe Campus	BSc (Hons) Architecture Degree Programme Conducted by SLIIT, Malabe Campus in academic partnership with Liverpool John Moores University, UK	Declared Course	Graduates who qualified before 2022 are eligible to sit the SLIA Part I Examination.
		Listed Course from 2022	Graduates who qualified in 2022 and after are eligible to apply for exemptions from the SLIA Part I Examination.
	Advanced Diploma in Architecture	Accredited Course from 2024 (Revalidation due in 2029)	Graduates who qualified in 2024 or after and obtained 50% or more marks in the SLIIT SOA internal assessment for Design in their Year 3 Comprehensive Design Project, marked by an external panel of examiners including a SLIA/BAE Examiner and passing out in 2024 and onwards to whom the Advanced Diploma in Architecture certificates are issued by SLIIT are exempted from the SLIA Part I Examination.
	Graduate Diploma in Architecture	Candidate Status from 2023	Graduates who passed or have been exempted from the SLIA Part I Examination are eligible to sit the SLIA Part II Examination.
Department of Architecture of the Sir John Kotelawala Defence University (KDU), Southern Campus	Bachelor of Architecture (BArch)	Candidate Status from 2022	<p>a. Those who completed Levels 1,2,3 with 28 weeks of inbuilt Practical Training are eligible to sit the SLIA Part I Examination.</p> <p>b. Graduates who passed the SLIA Part I Examination are eligible to sit the SLIA Part II Examination.</p>

2. The evaluation policy of qualifications granted by foreign educational institutions is given below;

A. For graduates of foreign programmes accredited by one of the following Institutions

- a. Evaluation of Part I and/or Part II level qualifications of applicants gained by following an architectural programme that is accredited by the national institute of architects of a country that is a signatory to the Canberra Accord.

- b. Evaluation of Part I and/or Part II level qualifications of applicants gained by following an architectural programme delivered in the United Kingdom that is accepted by the Architects Registration Board of the United Kingdom.
- c. Evaluation of Part I and/or Part II level qualifications of applicants gained by following an architectural programme delivered in Australia that is accredited by the Architects Accreditation Council of Australia.

Granting exemptions under this procedure is referred to as Stage 1 evaluation. Exemptions are granted on evaluation of each applicant separately. The applicant should possess 3 passes at the GCE (AL) or equivalent qualification. Each applicant is required to face a Viva Voce Examination conducted by a panel appointed by the BAE to assess their suitability to be granted exemption.

If an applicant's learning outcomes are not in par with the SLIA Part I and/or SLIA Part II Curriculum an exemption will not be granted.

B. For graduates of foreign programmes not accredited by any of the above Institutions

A detailed evaluation by a resource person appointed by BAE is carried out to establish whether the applicant's learning outcomes are in par with the SLIA Part I and/or SLIA Part II Curriculum. This is referred to as Stage 2 evaluation. Where a qualification has been evaluated and accepted by SLIA under Stage 2 evaluation, such evaluation is valid for a further 5 years. Exemptions are granted on evaluation of each applicant separately. The applicant should possess 3 passes at the GCE (AL) or equivalent qualification. Each applicant is required to face a Viva Voce Examination conducted by a panel appointed by the BAE to assess their suitability to be granted exemption.

If an applicant's learning outcomes are not in par with the SLIA Part I and/or SLIA Part II Curriculum an exemption will not be granted.

C. For foreign professional qualification holders practicing as architects in other countries

These applicants should possess SLIA Part I and or Part II qualifications or should have applied and obtained exemptions as detailed above as a pre requisite.

Thereafter, upon successful evaluation of their professional qualification to practice in another country through a Viva Voce Examination conducted by a panel appointed by the BAE to assess their suitability to be granted exemption;

- a. They should acquire practical training experience in Sri Lanka under a Registered Trainer Practice for a specified limited period of at least 52 weeks.
- b. They would be exempted from the components, Professional Correspondence for Project Administration (PCPA) and Case Study.
- c. They should follow the SLIA Part III course conducted by SLIA and sit and pass the Assignments, Question Paper and Viva Voce Examination.

Any person who passed the SLIA Part III Examination is eligible to apply and obtain Corporate Membership of the SLIA and after taking the Architect's Oath is eligible to register at the ARB as a Chartered Architect if that person is a citizen of Sri Lanka.

PATHS TO BECOME AN ARCHITECT

The Sri Lanka Institute of Architects (SLIA) established by the “Sri Lanka Institute of Architects Law No. 1 of 1976” and amended by the “Sri Lanka Institute of Architects (Amendment) Act No. 14 of 1996” is empowered to regulate and control architectural education in Sri Lanka. Accordingly, SLIA has established curricula for Parts I, II & III Examinations of the Sri Lanka Institute of Architects. Any person who intends to register with the Architects Registration Board (ARB) to practice as an Architect in Sri Lanka must possess these qualifications.

Only those candidates who have passed the Part I and Part II Examinations of the Sri Lanka Institute of Architects or obtained exemptions thereof are eligible to sit the Part III Examination of the Sri Lanka Institute of Architects which is conducted only by SLIA.

SLIA follows two processes to admit persons to obtain professional qualifications to register to practice Architecture in Sri Lanka. These are the **Examination Process**, and the **Exemption Process**.

THE EXAMINATION PROCESS

This refers to the formal path of architectural education for candidates to become Chartered Architects. SLIA conducts the following examinations annually for eligible candidates.

1. **Part I Examination of the Sri Lanka Institute of Architects** (SLIA Part I).
2. **Part II Examination of the Sri Lanka Institute of Architects** (SLIA Part II). Passing or obtaining exemptions from the SLIA Part I Examination is a prerequisite to sit or obtain exemptions from the SLIA Part II Examination.
3. **Part III Examination of the Sri Lanka Institute of Architects** (SLIA Part III). Passing or obtaining exemptions from the SLIA Part I and Part II Examinations is a prerequisite to sit the SLIA Part III Examination.

Teaching at SLIA Part I and SLIA Part II levels are done by Schools of Architecture. SLIA is the only institution that teaches and prepares candidates to sit the SLIA Part III Examination.

THE EXEMPTION PROCESS

SLIA considers the exemption of Sri Lankan qualifications and foreign qualifications separately. SLIA conducts a structured and systematic approach in evaluating applications submitted by academic institutions of Sri Lanka for validation of programmes of study in architecture conducted by those institutions.

1. For Sri Lankan qualifications; validations are done only at Part I and Part II levels. SLIA has granted three validation statuses. Exemption of Sri Lankan architectural qualifications are based on the validation status granted by SLIA to architectural educational programmes as follows.

Status	Entitlement
Candidate Status	Graduates can sit the respective Examination of SLIA.
Listed Course	Graduates can apply to obtain exemptions from relevant SLIA Examinations.
Accredited Status	Graduates are exempted from the respective SLIA Examination.

Architecture Programmes in Sri Lanka that have been validated by SLIA are as follows;

Institution	Programme of Study	Validation status granted	Remarks
Department of Architecture of the University of Moratuwa	Honours Degree of Bachelor of Architecture (B. Arch.)	Accredited Status (Revalidation due in 2029)	e. Those who have obtained 90 credits in the first 3 years of the programme are entitled to be exempted from the SLIA Part I Examination. f. Graduates are entitled to be exempted from the SLIA Part I and SLIA Part II Examinations. g. B.Sc. (BE) conferred previously is exempted from the SLIA Part I Examination. h. M.Sc. (Arch) conferred previously is exempted from the SLIA Part II Examination.
City School of Architecture (Colombo) Limited	CSA Diploma in Architectural Studies	Accredited Status (Revalidation due in 2026)	Exempted from the SLIA Part I Examination.
	CSA Higher Diploma in Architecture	Accredited Status (Revalidation due in 2026)	Exempted from the SLIA Part II Examination.
School of Architecture of the Sri Lanka Institute of Information Technology (SLIIT), Malabe Campus	BSc (Hons) Architecture Degree Programme Conducted by SLIIT, Malabe Campus in academic partnership with Liverpool John Moores University, UK	Declared Course	Graduates who qualified before 2022 are eligible to sit the SLIA Part I Examination.
		Listed Course from 2022	Graduates who qualified in 2022 and after are eligible to apply for exemptions from the SLIA Part I Examination.
	Advanced Diploma in Architecture	Accredited Course from 2024 (Revalidation due in 2029)	Graduates who qualified in 2024 or after and obtained 50% or more marks in the SLIIT SOA internal assessment for Design in their Year 3 Comprehensive Design Project, marked by an external panel of examiners including a SLIA/BAE Examiner and passing out in 2024 and onwards to whom the Advanced Diploma in Architecture certificates are issued by SLIIT are exempted from the SLIA Part I Examination.
	Graduate Diploma in Architecture	Candidate Status from 2023	Graduates who passed or have been exempted from the SLIA Part I Examination are eligible to sit the SLIA Part II Examination.
Department of Architecture of the Sir John Kotelawala Defence University (KDU), Southern Campus	Bachelor of Architecture (BArch)	Candidate Status from 2022	c. Those who completed Levels 1,2,3 with 28 weeks of inbuilt Practical Training are eligible to sit the SLIA Part I Examination. d. Graduates who passed the SLIA Part I Examination are eligible to sit the SLIA Part II Examination.

2. The evaluation policy of qualifications granted by foreign educational institutions is given below;

A. For graduates of foreign programmes accredited by one of the following Institutions

- a. Evaluation of Part I and/or Part II level qualifications of applicants gained by following an architectural programme that is accredited by the national institute of architects of a country that is a signatory to the Canberra Accord.

- b. Evaluation of Part I and/or Part II level qualifications of applicants gained by following an architectural programme delivered in the United Kingdom that is accepted by the Architects Registration Board of the United Kingdom.
- c. Evaluation of Part I and/or Part II level qualifications of applicants gained by following an architectural programme delivered in Australia that is accredited by the Architects Accreditation Council of Australia.

Granting exemptions under this procedure is referred to as Stage 1 evaluation. Exemptions are granted on evaluation of each applicant separately. The applicant should possess 3 passes at the GCE (AL) or equivalent qualification. Each applicant is required to face a Viva Voce Examination conducted by a panel appointed by the BAE to assess their suitability to be granted exemption.

If an applicant's learning outcomes are not in par with the SLIA Part I and/or SLIA Part II Curriculum an exemption will not be granted.

B. For graduates of foreign programmes not accredited by any of the above Institutions

A detailed evaluation by a resource person appointed by BAE is carried out to establish whether the applicant's learning outcomes are in par with the SLIA Part I and/or SLIA Part II Curriculum. This is referred to as Stage 2 evaluation. Where a qualification has been evaluated and accepted by SLIA under Stage 2 evaluation, such evaluation is valid for a further 5 years. Exemptions are granted on evaluation of each applicant separately. The applicant should possess 3 passes at the GCE (AL) or equivalent qualification. Each applicant is required to face a Viva Voce Examination conducted by a panel appointed by the BAE to assess their suitability to be granted exemption.

If an applicant's learning outcomes are not in par with the SLIA Part I and/or SLIA Part II Curriculum an exemption will not be granted.

C. For foreign professional qualification holders practicing as architects in other countries

These applicants should possess SLIA Part I and or Part II qualifications or should have applied and obtained exemptions as detailed above as a pre requisite. Thereafter, upon successful evaluation of their professional qualification to practice in another country through a Viva Voce Examination conducted by a panel appointed by the BAE to assess their suitability to be granted exemption;

- a. They should acquire practical training experience in Sri Lanka under a Registered Trainer Practice for a specified limited period of at least 52 weeks.
- b. They would be exempted from the components, Professional Correspondence for Project Administration (PCPA) and Case Study.
- c. They should follow the SLIA Part III course conducted by SLIA and sit and pass the Assignments, Question Paper and Viva Voce Examination.

Any person who passed the SLIA Part III Examination is eligible to apply and register at the ARB as an Architect if that person is a citizen of Sri Lanka. Those registered at ARB as Architects are governed by the SLIA Regulations.

PATH TO BECOME AN ARCHITECTURAL LICENTIATE

The Sri Lanka Institute of Architects (SLIA) established by the “Sri Lanka Institute of Architects Law No. 1 of 1976” and amended by the “Sri Lanka Institute of Architects (Amendment) Act No. 14 of 1996” is empowered to regulate and control architectural education in Sri Lanka.

Accordingly, SLIA has established curricula for conducting the Qualifying Examination for Architectural Licentiates (QEAL). Any person who intends to register with the Architects Registration Board (ARB) to qualify to practice as an Architectural Licentiate in Sri Lanka has to pass the above examination. Only the SLIA conducts the above examination.

Passing the QEAL and obtaining the certificate issued by the SLIA to that effect is a pre-requisite to apply for registration as an “Architectural Licentiates” with the ARB.

Candidates to sit the QEAL are selected by SLIA after evaluating whether they fulfil one of the following entry criteria on qualification and experience;

No.	Qualification	Prescribed work experience
1.	Graduate Membership of SLIA	4 years under a Chartered Architect or an Architect after Graduate Membership.
2.	SLIA Part I	5 years under a Chartered Architect or an Architect after SLIA Part I.
3.	B.Sc. Built Environment	5 years under a Chartered Architect or an Architect after B.Sc. Built Environment.
4.	Possessing other overseas qualifications in Architecture (equivalent to 1, 2 or 3 of above) as acceptable to the SLIA. The process to obtain exemption is detailed below*.	5 years out of which 1 year in Sri Lanka under a Chartered Architect or an Architect, after overseas Qualifications.
5.	Involved in the field of designing of buildings for a prescribed period.	(a) 15 years of which 5 years in a position of responsibility and 10 years being involved in the field of designing of buildings as the main source of income/livelihood OR (b) 10 years under a Chartered Architect or an Architect of which 5 years in a position of responsibility

*The evaluation policy of qualifications granted by foreign educational institutions is given below;

A. For graduates of foreign programmes accredited by one of the following Institutions

- Evaluation of Part I level qualifications of applicants gained by following an architectural programme that is accredited by the national institute of architects of a country that is a signatory to the Canberra Accord.
- Evaluation of Part I level qualifications of applicants gained by following an architectural programme delivered in the United Kingdom that is accepted by the Architects Registration Board of the United Kingdom.
- Evaluation of Part I level qualifications of applicants gained by following an architectural programme delivered in Australia that is accredited by the Architects Accreditation Council of Australia.

Granting exemptions under this procedure is referred to as Stage 1 evaluation. Exemptions are granted on evaluation of each applicant separately. The applicant should possess 3 passes at the GCE (AL) or equivalent qualification. Each

applicant is required to face a Viva Voce Examination conducted by a panel appointed by the BAE to assess their suitability to be granted exemption.

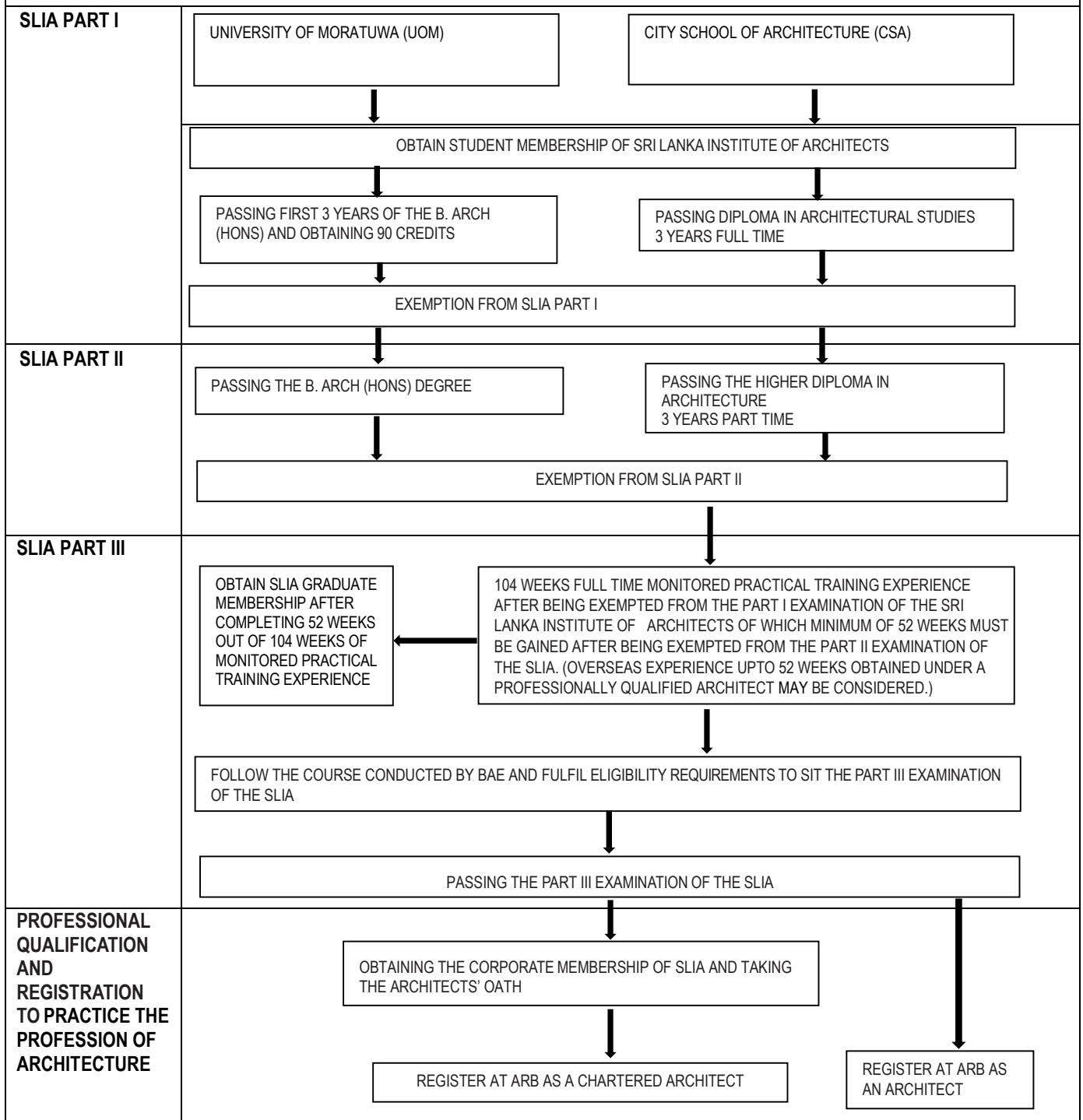
If an applicant's learning outcomes are not in par with the SLIA Part I Curriculum an exemption will not be granted.

B. For graduates of foreign programmes not accredited by any of the above Institutions

A detailed evaluation by a resource person appointed by BAE is carried out to establish whether the applicant's learning outcomes are in par with the SLIA Part I Curriculum. This is referred to as Stage 2 evaluation. Where a qualification has been evaluated and accepted by SLIA under Stage 2 evaluation, such evaluation is valid for a further 5 years. Exemptions are granted on evaluation of each applicant separately. The applicant should possess 3 passes at the GCE (AL) or equivalent qualification. Each applicant is required to face a Viva Voce Examination conducted by a panel appointed by the BAE to assess their suitability to be granted exemption. If an applicant's learning outcomes are not in par with the SLIA Part I Curriculum an exemption will not be granted.

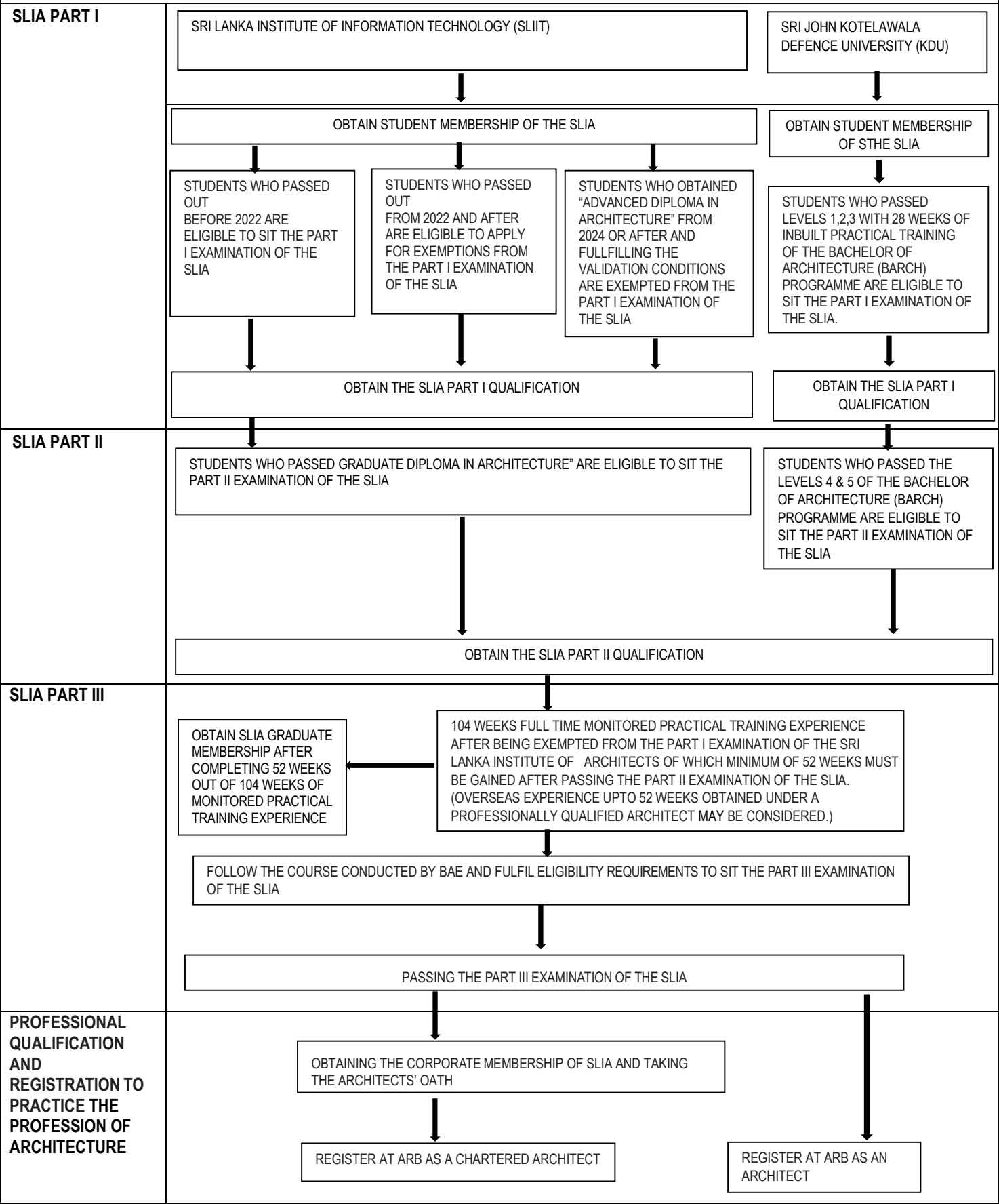
Any person who passed the Qualifying Examination for Architectural Licentiates conducted by SLIA is eligible to apply and register at the ARB as an Architectural Licentiate if that person is a citizen of Sri Lanka. Those registered at ARB as Architectural Licentiates are governed by the SLIA Regulations.

PATH TO REGISTER AS A CHARTERED ARCHITECT / ARCHITECT FOR PERSONS HOLDING QUALIFICATIONS GRANTED ACCREDITED STATUS BY SLIA



*The minimum entry qualification accepted by SLIA is 3 subjects passed at the GCE (AL) or equivalent Examination

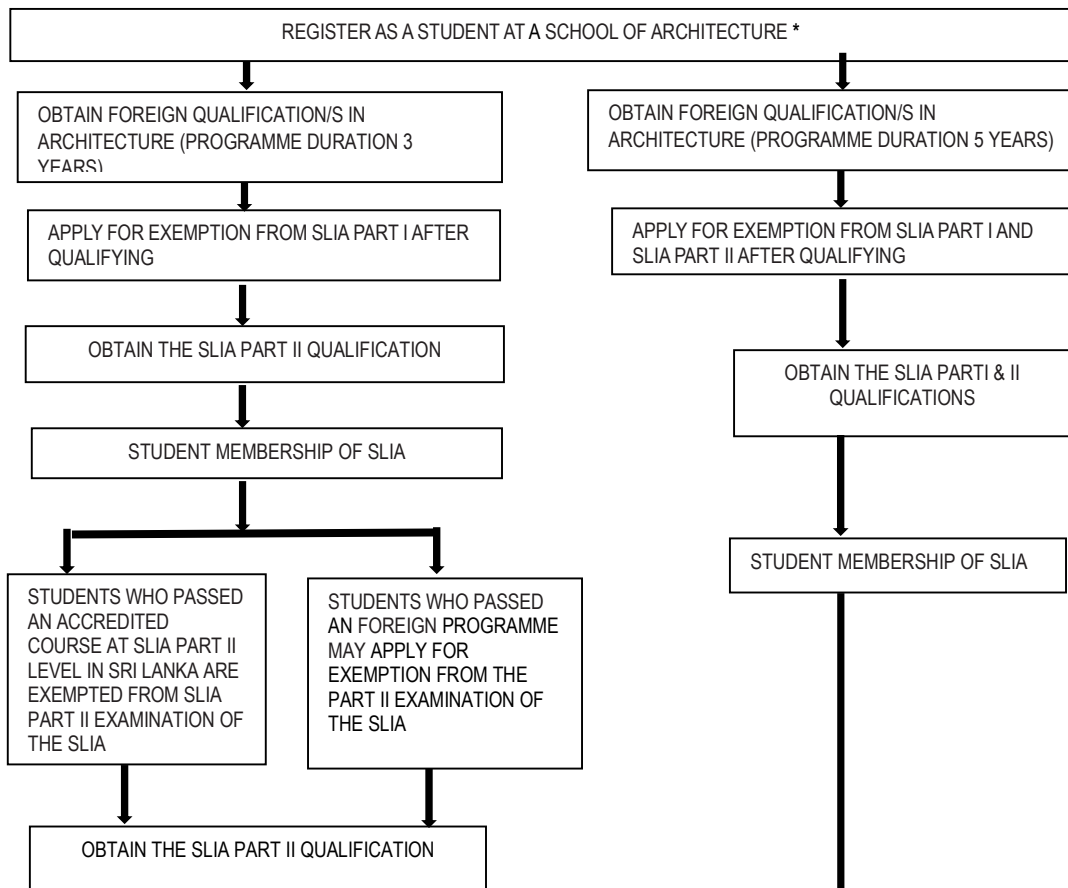
PATH TO REGISTER AS A CHARTERED ARCHITECT / ARCHITECT FOR PERSONS HOLDING QUALIFICATIONS OBTAINED FROM INSTITUTIONS SEEKING VALIDATION FROM SLIA



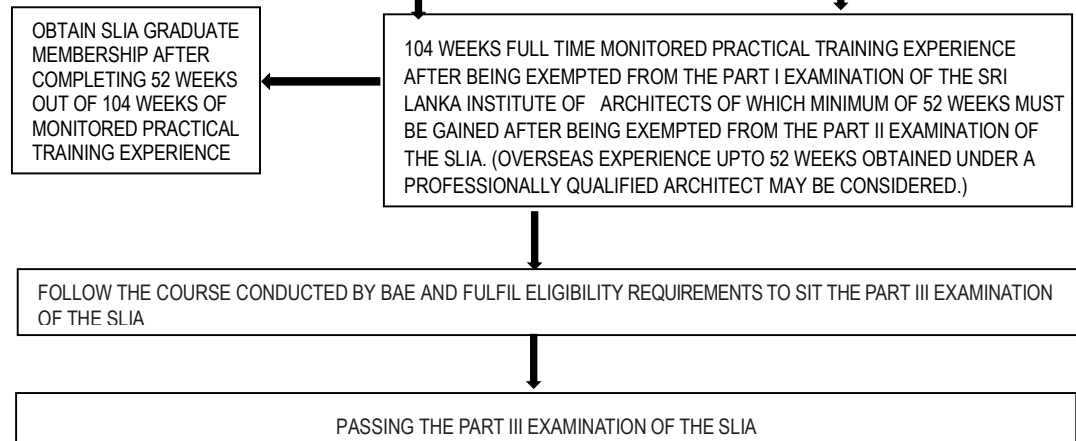
*The minimum entry qualification accepted by SLIA is 3 subjects passed at the GCE (AL) or equivalent Examination

PATH TO REGISTER AS A CHARTERED ARCHITECT / ARCHITECT FOR PERSONS HOLDING FOREIGN QUALIFICATIONS

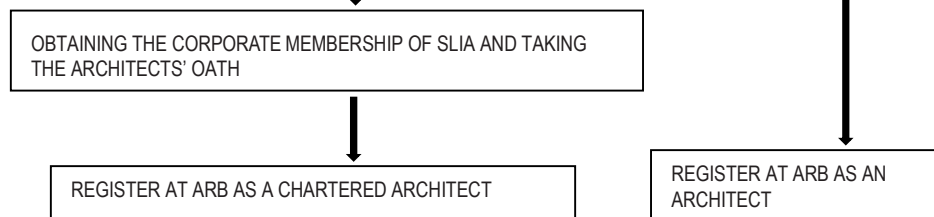
SLIA PART I & II



SLIA PART III



PROFESSIONAL QUALIFICATION AND REGISTRATION TO PRACTICE THE PROFESSION OF ARCHITECTURE



* The minimum entry qualification accepted by SLIA is 3 subjects passed at the GCE (AL) or equivalent Examination

PATH TO REGISTER AS AN ARCHITECTURAL LICENTIATE

